



# What the Future Holds

Helge Eng  
Deputy Director, Resource Management  
CAL FIRE

February 23, 2019

California SAF Winter Meeting  
Folsom, CA



C240  
P112 E  
8-19-03  
CONTROL





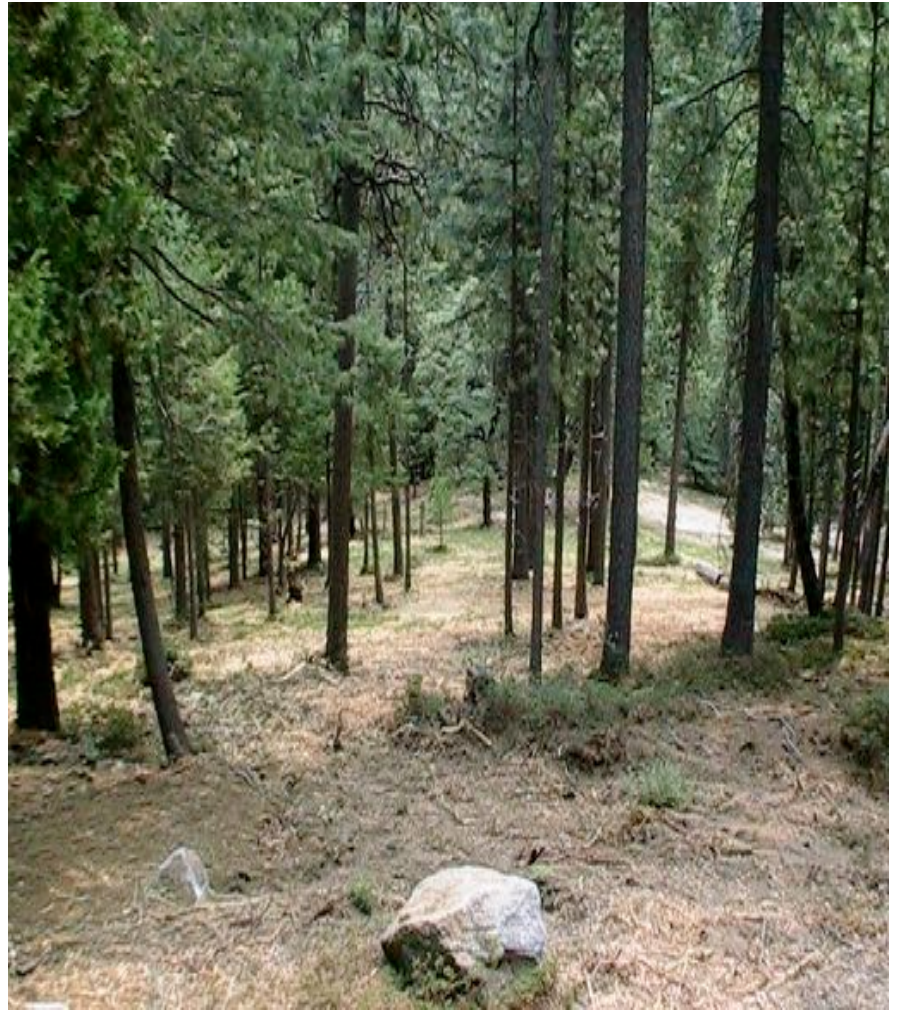




Lassen-  
Modoc  
Unit

Thinned  
Stand











Camp Fire,  
2018:

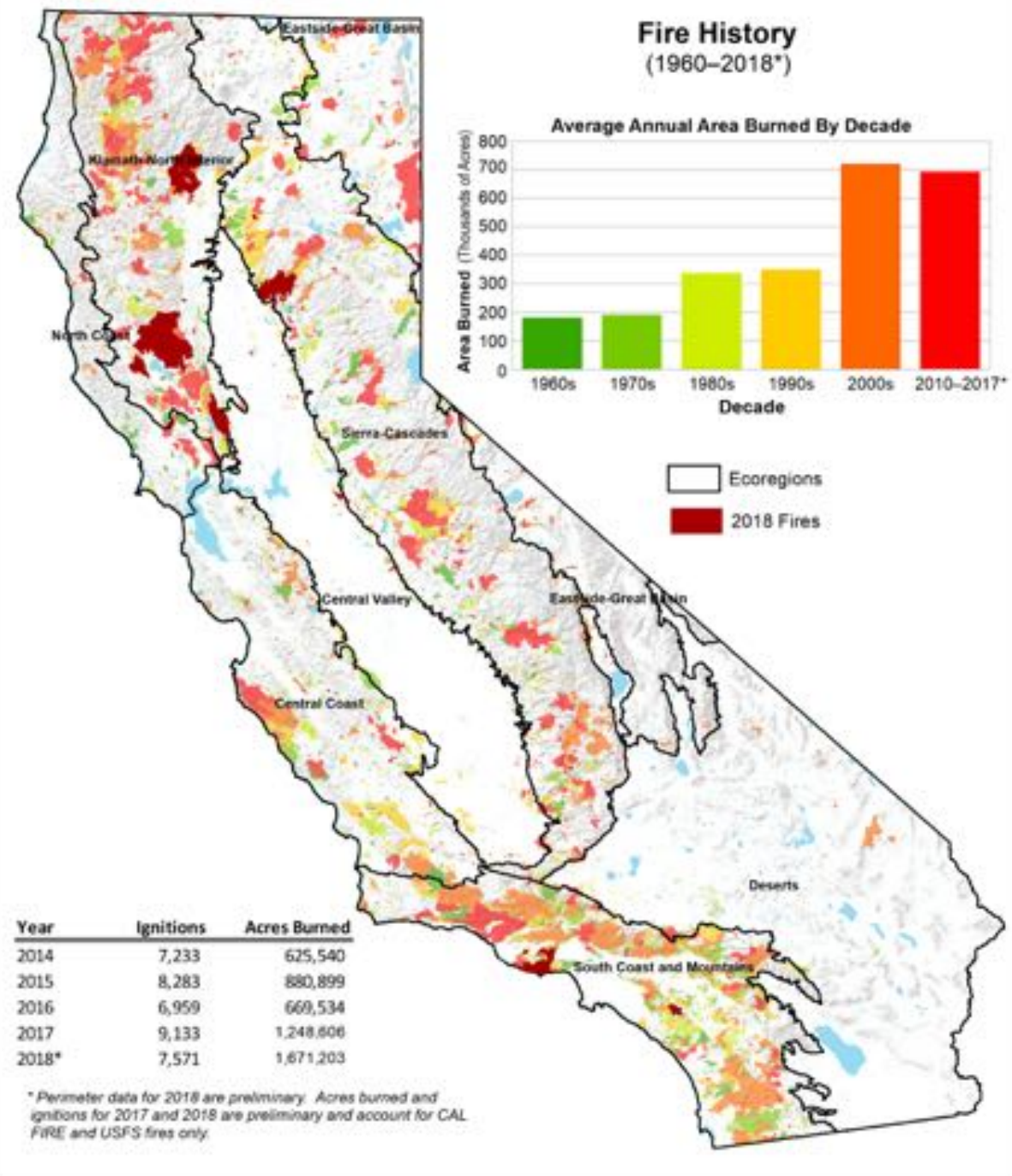
85 fatalities

18, 804 homes  
destroyed

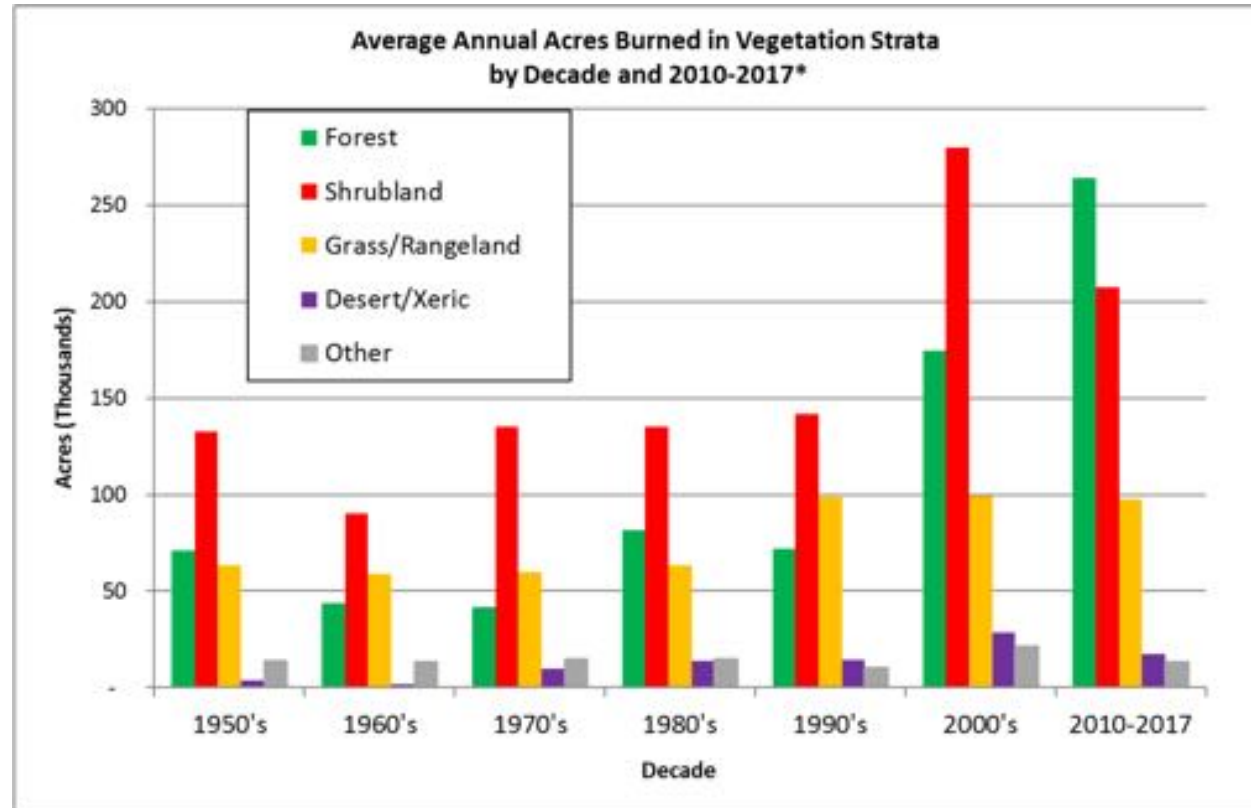
Year	Total hurricanes	Made landfall as hurricane in the U.S.	Deaths
1998	10	3	23
1999	8	2	60
2000	8	0	4
2001	9	0	42
2002	4	1	5
2003	7	2	24
2004	9	6	59
2005	15	7	1,518
2006	5	0	0
2007	6	1	1
2008	8	4	41
2009	3	1	6
2010	12	0	11
2011	7	1	44
2012	10	1	83
2013	2	0	1
2014	6	1	2
2015	4	0	3
2016	7	3	36
2017	10	4	147

Source: Insurance Information Institute from data supplied by the U.S. Department of Commerce, National Oceanic and Atmospheric Administration, National Hurricane Center.





# Wildfire Activity: Area Burned 1960-2017



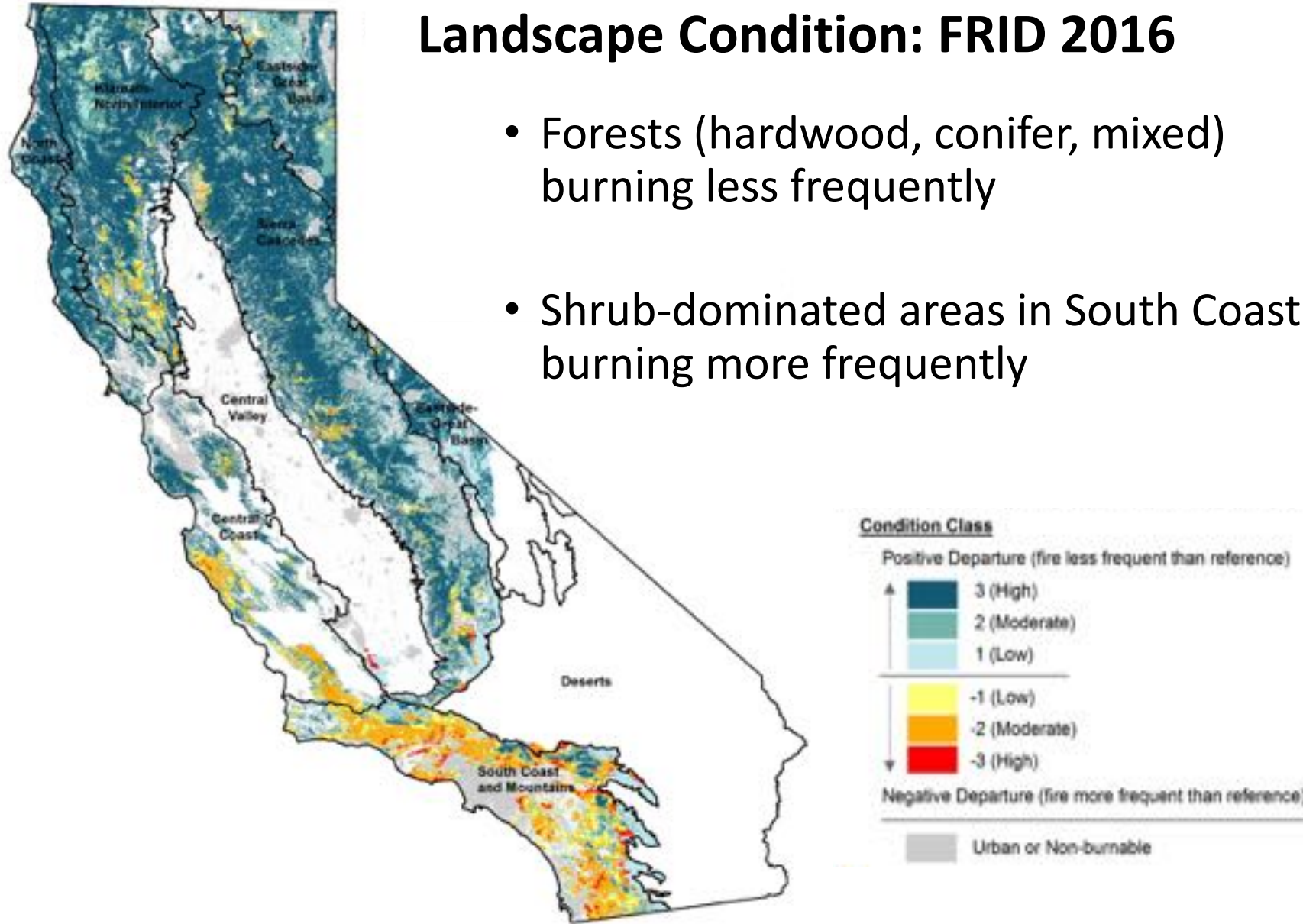
- Increase in annual area burned in both conifer and shrub over the last two decades
- 2000-2009, more shrub. 2010-2017, more forest.





# Landscape Condition: FRID 2016

- Forests (hardwood, conifer, mixed) burning less frequently
- Shrub-dominated areas in South Coast burning more frequently



# Executive Order

B-52-18

May 10, 2018

Double the total statewide rate of forest treatments within 5 years to at least 500,000 acres per year.

Increase new landowner agreements and memoranda of understanding, such as Good Neighbor Authority agreements, to accelerate forest restoration thinning and prescribed fire projects across jurisdictions.





Executive Order

N-05-19

January 8, 2019

## Actions to reduce the impact of deadly wildfires this year:

- How to quickly deploy personnel and resources for fuels management
- Policy changes to allow more rapid and effective fuels management
- Methods to identify highest risk communities



The 2018-2019 budget allocated \$200 million to CAL FIRE CCI Programs:

# California Climate Investments

- \$165 million for Forest Health, Forest Legacy, and Fire Prevention grants
- \$35 million for fuels reduction crews
- National Guard, 5 crews





# California Climate Investments

- Total \$200 million in FY 18-19 budget from GGRF
  - \$35 million for 6 prescribed fire crews – start up costs included
  - \$165 million for Forest Health and Fire Prevention
    - \$5 million to Urban and Community Forestry
    - \$5 million to California Conservation Corps
    - Up to \$155 million for Forest Health and Fire Prevention projects including grants
- 5 years “continued” funding in SB901 - Wildfires
  - \$1 billion to be allocated between FY 19-20 and 23-24 (5 years)
  - Prescribed fire crews will expand to 10

# CCI Grants Awarded

- FY 17-18: \$91.5 million awarded
- FY 16-17: \$16 million awarded
- 27 total projects; 240,000 acres

Other data	
Research (# of projects)	9
Biomass Utilization (tons)	1,300,440
Reforestation (trees)	4,523,428

Treatment Activity	Acres
Fuels Reduction	91,987
Prescribed Fire	27,883
Pest Management	24,076
Biomass Utilization	65,784
Reforestation	17,739
Conservation Easement	19,315
Total	246,784



# CAL FIRE Prescribed Fire Crews

3 Crews in Southern Region, 3 in the Northern Region

- 1 Fire Captain
- 1 Fire Apparatus Engineer
- 1 Forestry Assistant II
- 1 Equipment Operator
- 9 Forestry Technicians

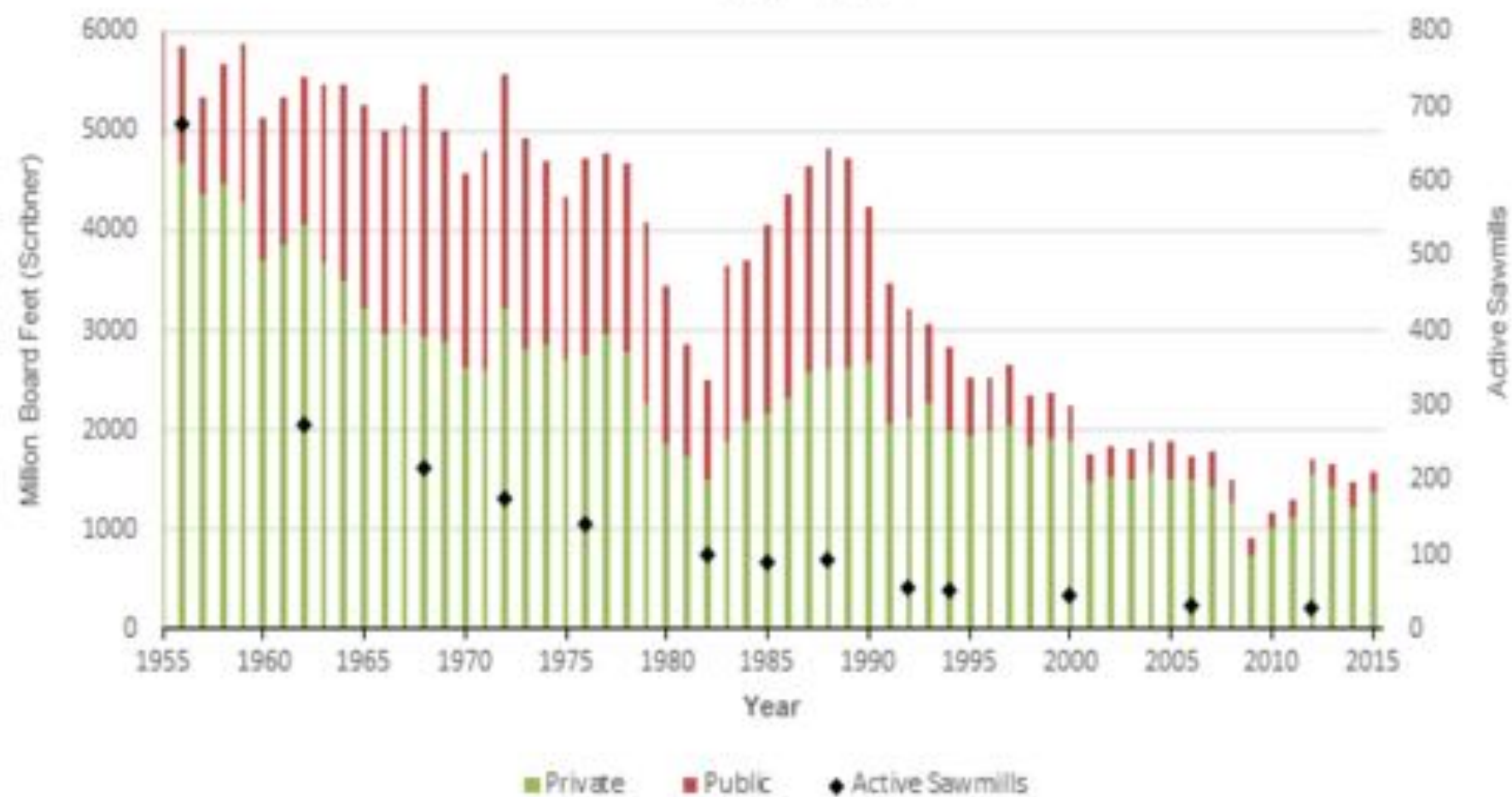
CAL FIRE Vegetation  
Management Program projects

Cooperative Projects

- Department of Parks and Recreation
- The Nature Conservancy (TREN)
- Watershed Learning center
- USDA Forest Service
- Other

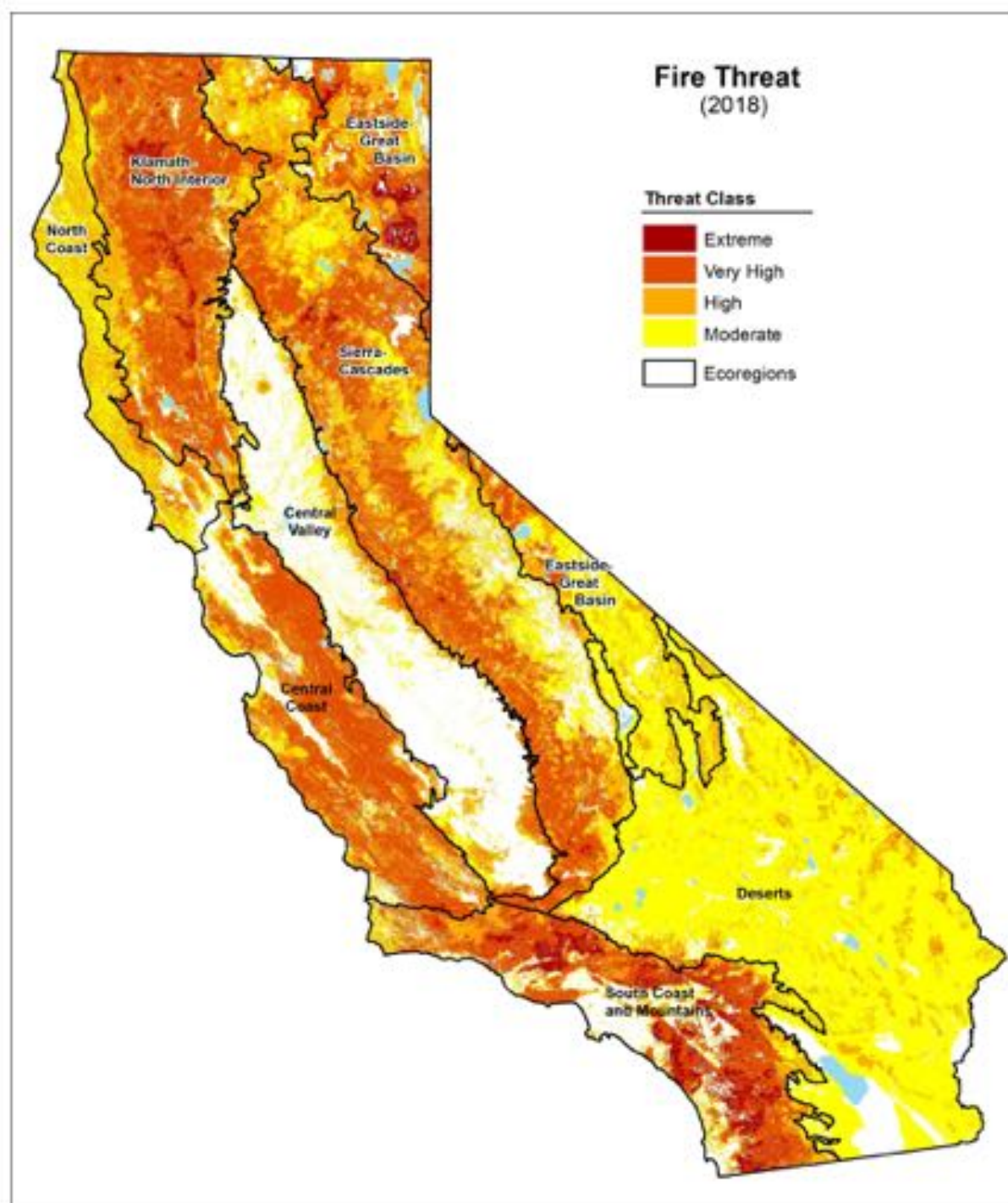


Public and Private Harvest, and Active Sawmills  
1955 - 2015

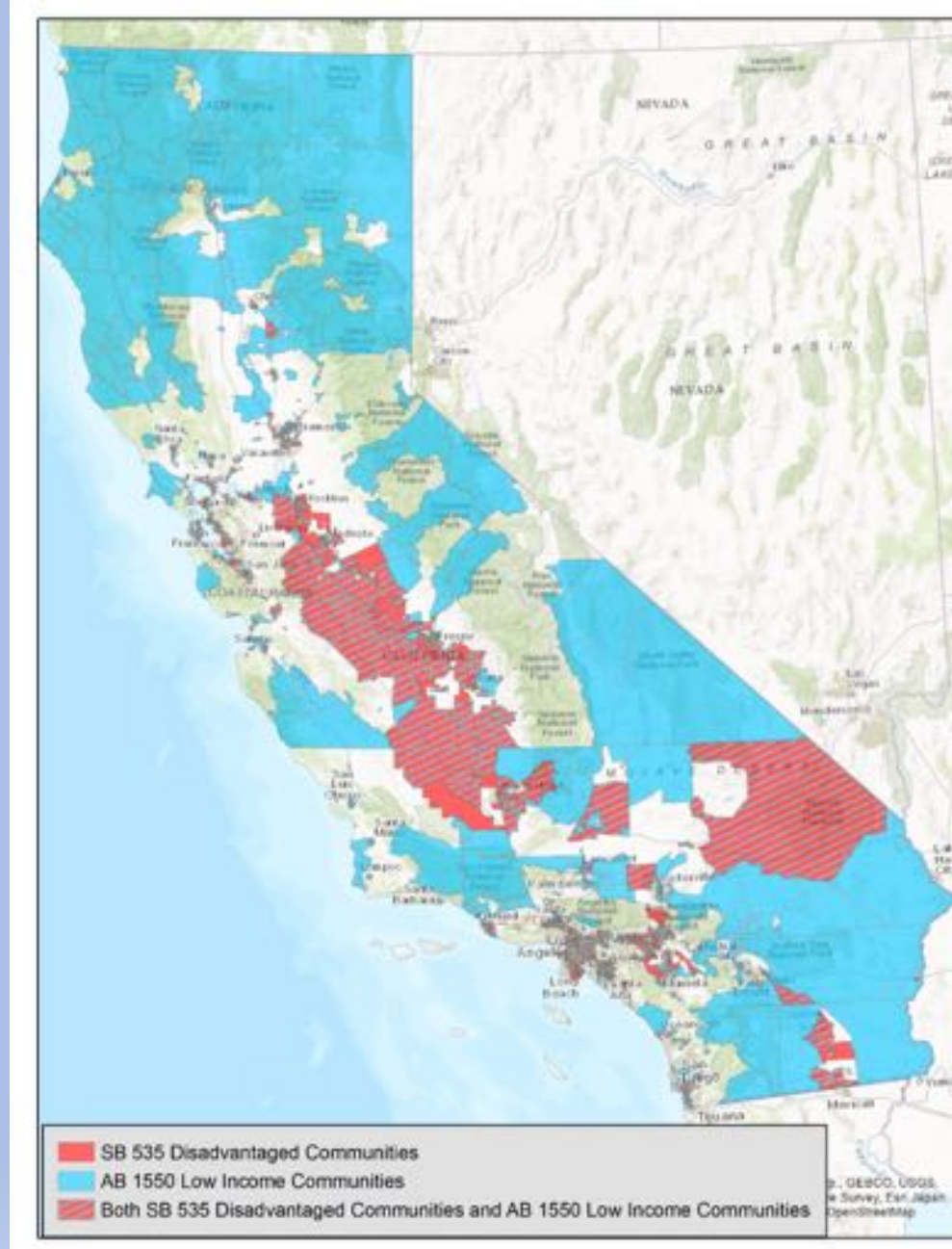




Protect life and pro

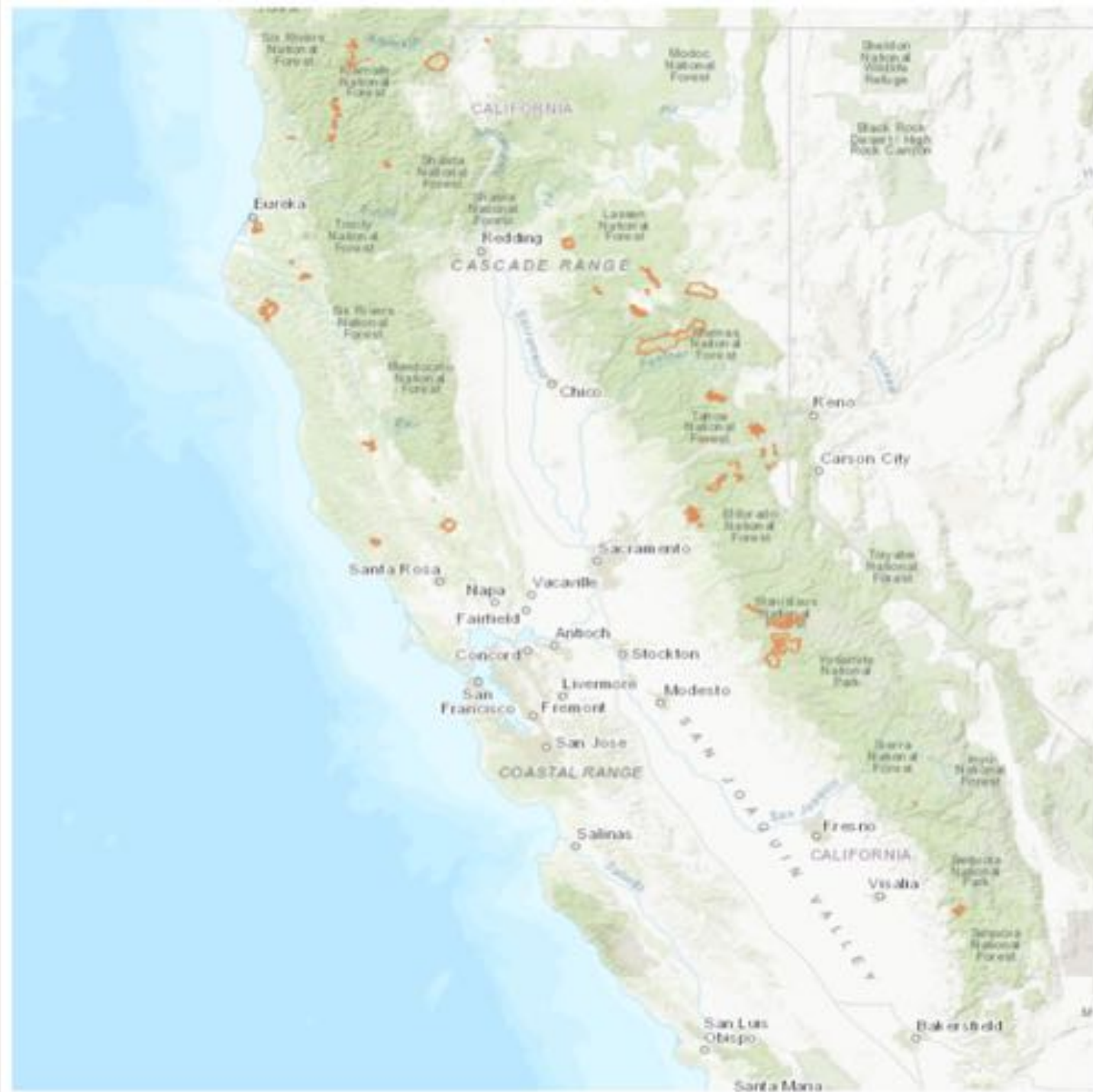


# Disadvantaged & Low-income Communities Investments

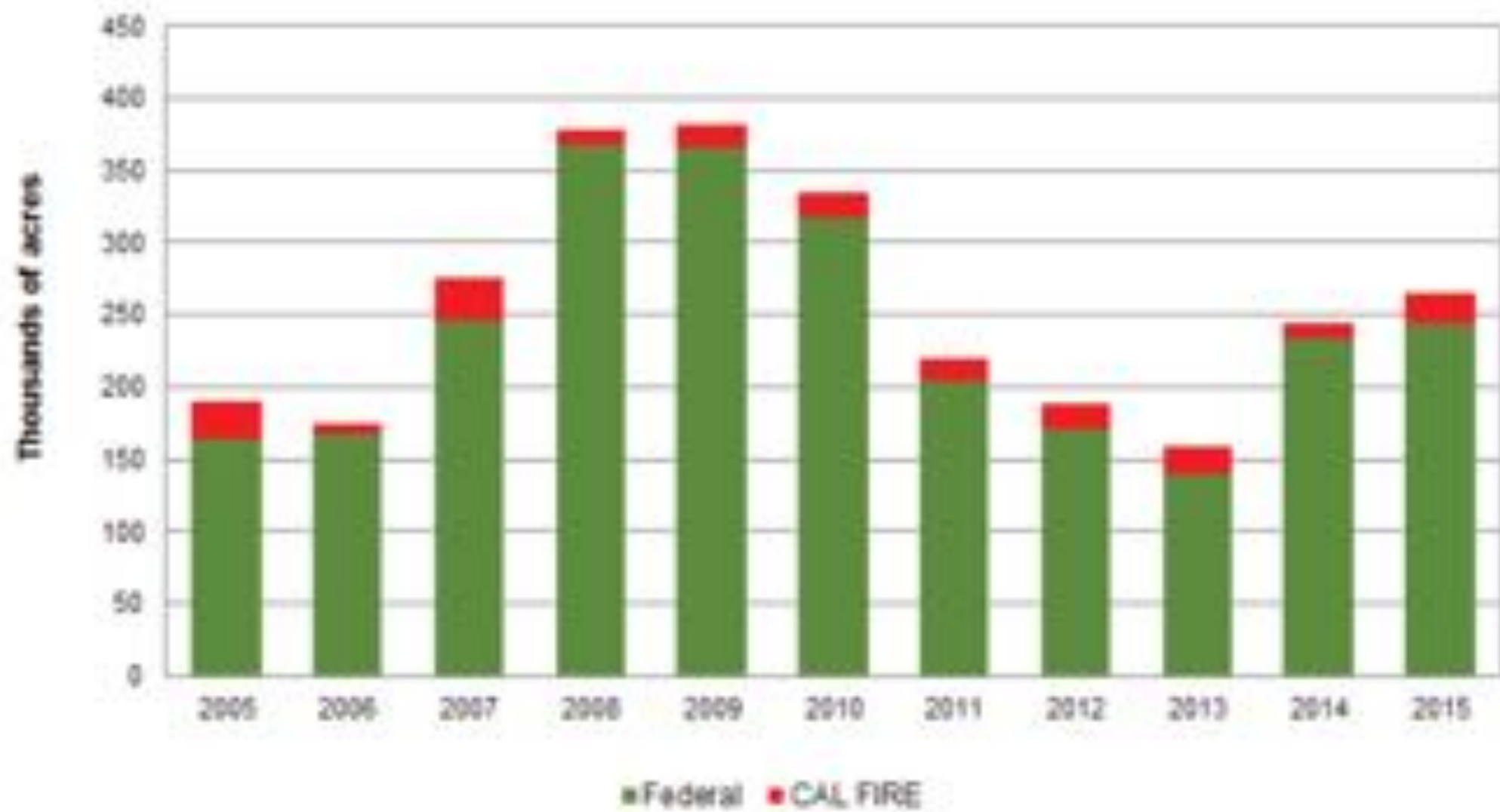


<https://www.arb.ca.gov/cc/capandtrade/auctionproceeds/communityinvestments.htm>





Annual Area Treated  
2005-2015







Mechanical Fuels Reduction



Prescribed Fire



Thinning



Reforestation

















SPI 1038  
Drought  
Mortality  
Exemption  
Tuolumne  
County





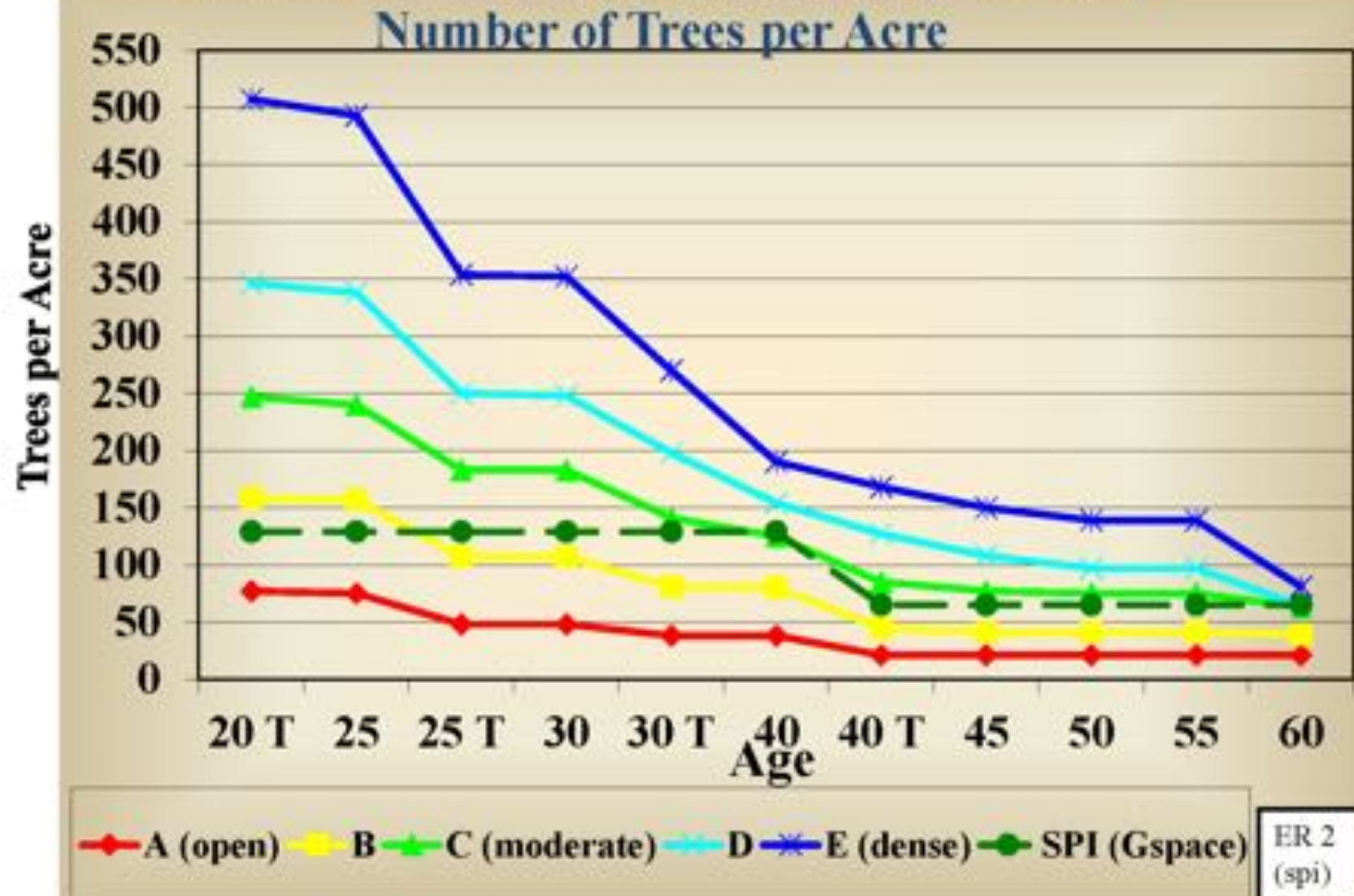
Area under a  
THP that was  
declared  
substantially  
damaged  
timberlands  
from bark  
beetle epidemic

Tuolumne  
County



# Elliot Ranch Thinning Study

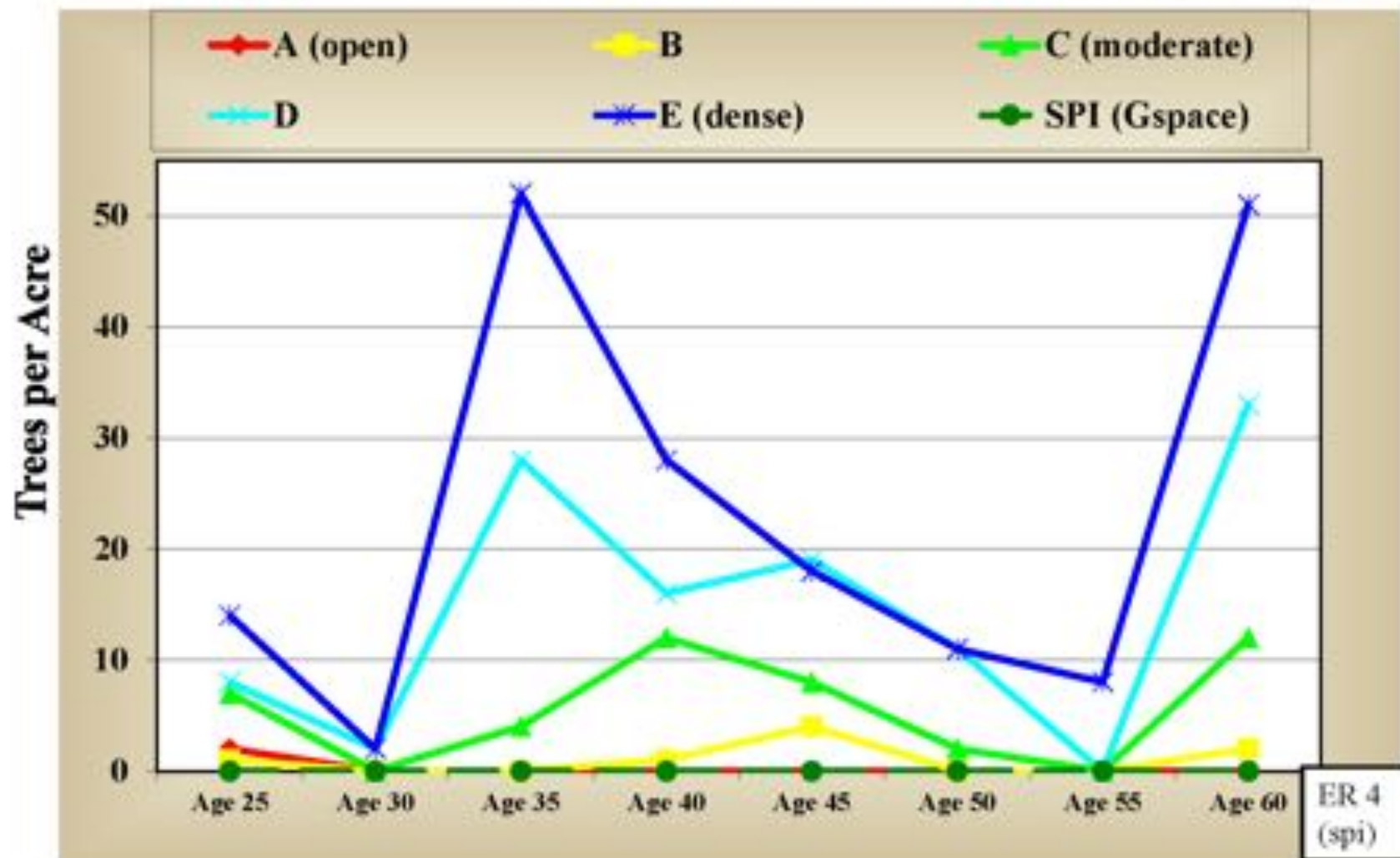
## Levels of Growing Stock (LOGS)



# Elliot Ranch Thinning Study

## Levels of Growing Stock (LOGS)

Mortality (Number of trees/acre that died in the period)









## DEFENSIBLE SPACE ZONES

























Thank you!

Helge Eng

Department of Forestry and Fire Protection (CAL FIRE)

Helge.Eng@fire.ca.gov

916-653-5000







Thank you!

Helge Eng

Department of Forestry and Fire Protection (CAL FIRE)

[Helge.Eng@fire.ca.gov](mailto:Helge.Eng@fire.ca.gov)

916-653-5000