

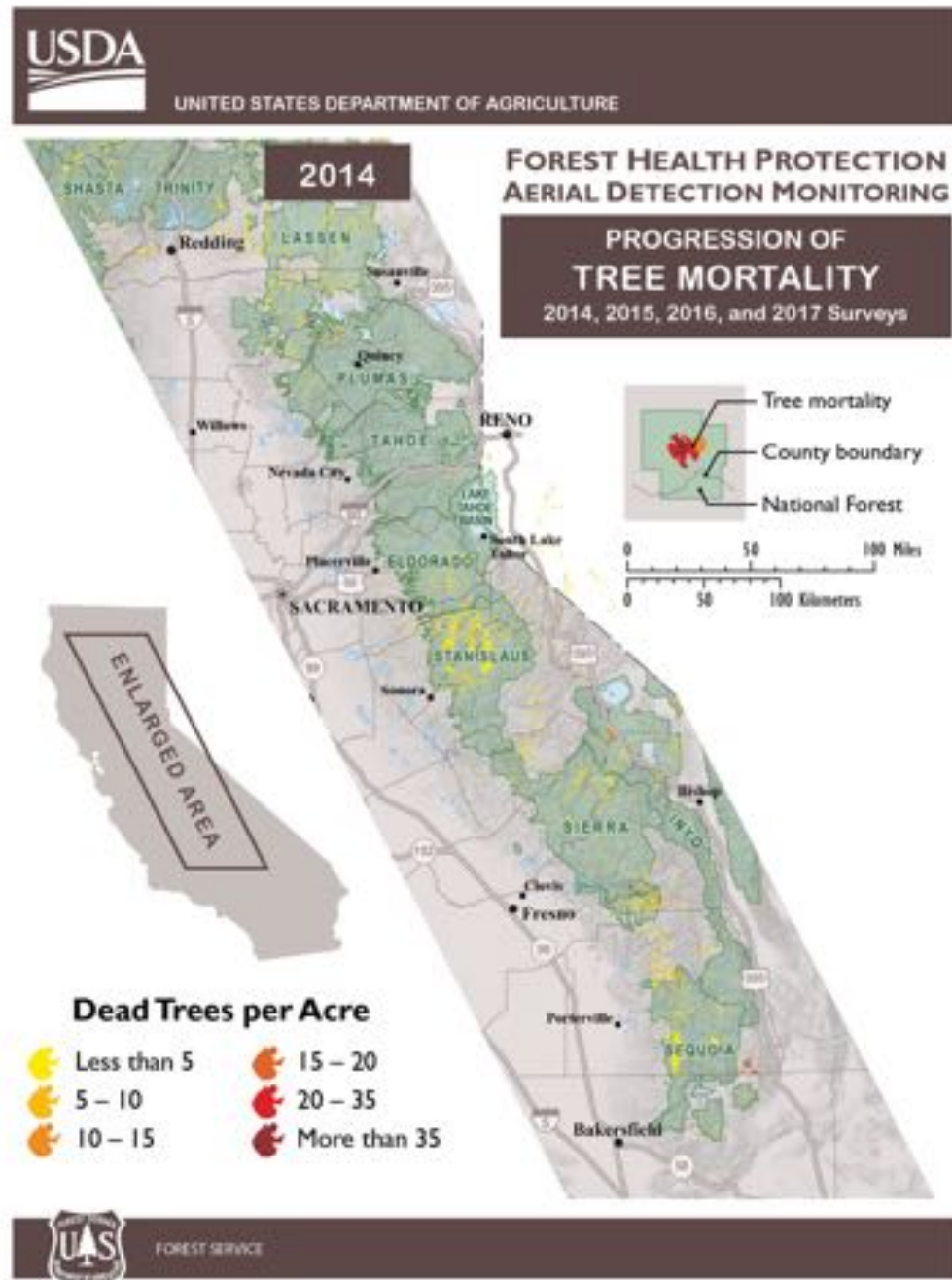


California Forest Management Task Force

Coordinating the state's investments in
forest management, wood utilization,
and workforce development

Five Years of Drought

Explosive Tree Mortality



State of Emergency



Executive Department State of California

PROCLAMATION OF A STATE OF EMERGENCY

WHEREAS the State of California is experiencing record drought conditions, which have persisted for the last four years; and

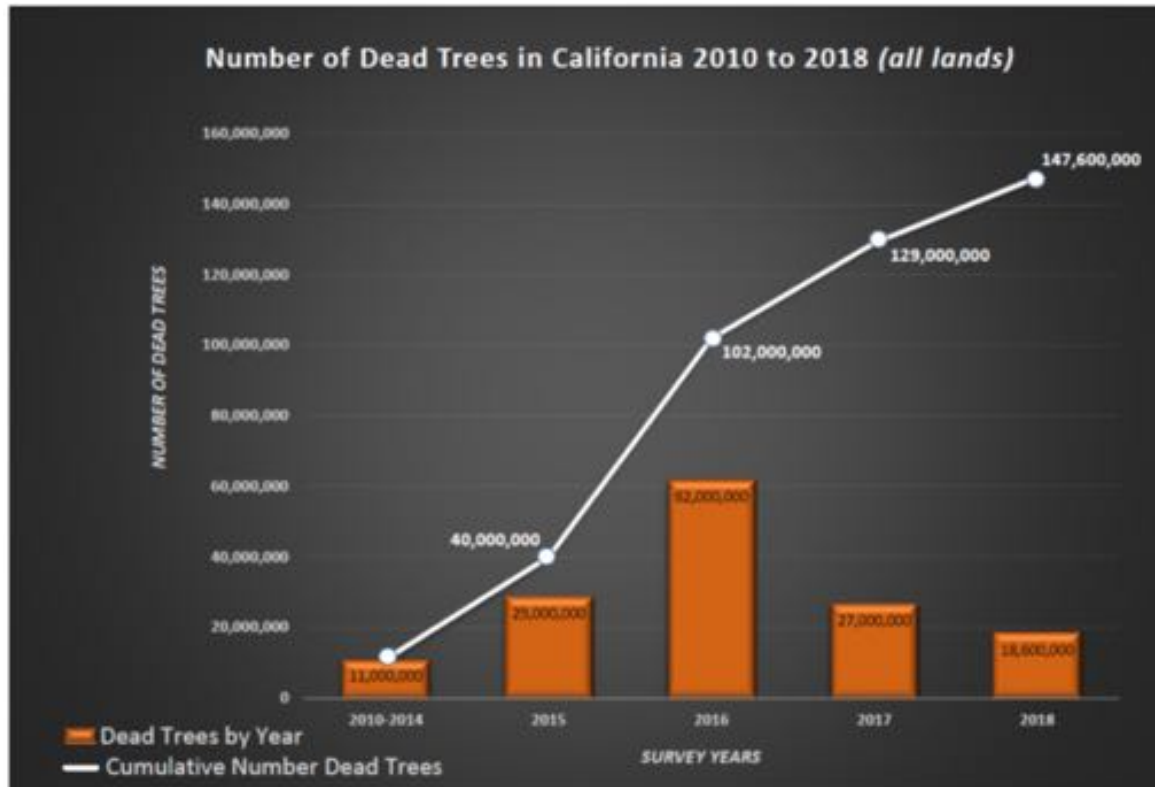
WHEREAS on January 17, 2014, I proclaimed a State of Emergency to exist throughout the State of California due to severe drought conditions; and

WHEREAS a lack of precipitation over the last four years has made trees in many regions of California susceptible to epidemic infestations of native bark beetles, which are constrained under normal circumstances by the defense mechanisms of healthy trees; and

WHEREAS these drought conditions and resulting bark beetle infestations across broad areas have caused vast tree mortality in several regions of the state, with the United States Forest Service estimating that over 22 million trees are dead and that tens of millions more are likely to die by the end of this year; and

WHEREAS recent scientific measurements suggest that the scale of this tree die-off is unprecedented in modern history; and

Tree Mortality



- 2010-2014: 11 Million
- 2015: 29 Million
- 2016: 62 Million
- 2017: 27 Million
- 2018: 18.6 Million
- **Total: 147.6 Million**

California Tree Mortality Task Force

- 2015-2018
- 7 Interdisciplinary Working Groups
- 19 Directives
- 80 Entities
- 10 Counties



Consensus: The issue goes beyond tree mortality

- Fire on the Mountain: Rethinking Forest Management in the Sierra Nevada
 - Little Hoover Commission
- Improving the Health of California's Headwater Forests
 - Public Policy Institute of California
- Improving California's Forest & Watershed Management
 - Legislative Analyst's Office
- Forest Carbon Plan





The “New Normal”

This is the new normal, and this could be something that happens every year or every few years.

– Gov. Jerry Brown December 2017

Executive Order B-52-18

May 2018

“WHEREAS the Forest Carbon Plan has been developed by state agencies to provide consensus forest practices that will achieve resilient forests that can withstand and adapt to wildfire, drought and a changing climate, safeguard the state's water supply, and ensure the state's forests operate as a carbon sink.”

California Forest Carbon Plan

Managing Our Forest Landscapes in a Changing Climate



May 2018

CALIFORNIA
Natural
Resources



CalEPA
California Environmental
Protection Agency

2018 Legislative Direction to Task Force

AB 901: Requires the Task Force to provide recommendations on streamlining the Forest Practices Act by July 1, 2020

AB 1981: Work with CalEPA and CAL FIRE to reduce GHG emissions through application of compost on working lands

AB 2019: Develop recommendations with the Department of Insurance on an insurance pool for prescribed burn managers

Top 20 Most Destructive California Wildfires

	FIRE NAME (CAUSE)	DATE	COUNTY	ACRES	STRUCTURES	DEATHS
➡	1 CAMP FIRE (Under Investigation)	November 2018	Butte County	153,336	18,804	85
➡	2 TUBBS (Electrical)	October 2017	Napa & Sonoma	36,807	5,636	22
	3 TUNNEL - Oakland Hills (Rekindle)	October 1991	Alameda	1,600	2,900	25
	4 CEDAR (Human Related)	October 2003	San Diego	273,246	2,520	15
➡	5 VALLEY (Electrical)	September 2015	Lake, Napa & Sonoma	76,067	1,933	4
	6 WITCH (Powerlines)	October 2007	San Diego	197,880	1,650	2
➡	7 WOOLSEY (Under Investigation)	November 2018	Ventura	96,949	1,643	3
➡	8 CARR (Human Related)	July 2018	Shasta County, Trinity County	229,651	1,614	8
➡	9 NUNS (Powerline)	October 2017	Sonoma	54,382	1,333	3
➡	10 THOMAS (Under Investigation)	December 2017	Ventura & Santa Barbara	251,893	1,063	2
	11 OLD (Human Related)	October 2003	San Bernardino	91,281	1,003	6
	12 JONES (Undetermined)	October 1999	Shasta	26,200	954	1
➡	13 BUTTE (Powerlines)	September 2015	Amador & Calaveras	70,868	921	2
➡	14 ATLAS (Powerline)	October 2017	Napa & Solano	51,624	783	6
	15 PAINT (Arson)	June 1990	Santa Barbara	4,900	641	1
	16 FOUNTAIN (Arson)	August 1992	Shasta	63,960	636	0
	17 SAYRE (Misc.)	November 2008	Los Angeles	11,262	604	0
	18 CITY OF BERKELEY (Powerlines)	September 1923	Alameda	130	554	0
	19 HARRIS (Undetermined)	October 2007	San Diego	90,440	548	8
➡	20 REDWOOD VALLEY (Powerline)	October 2017	Mendocino	36,523	546	9



*"Structures" include homes, outbuildings (barns, garages, sheds, etc) and commercial properties destroyed.

**This list does not include fire jurisdiction. These are the Top 20 regardless of whether they were state, federal, or local responsibility.

2/19/2019



CA Forest Management Task Force

- Led by Governor's Office, CAL FIRE, Natural Resources Agency, and CalEPA.
- Over 20 state, federal and local agencies and organizations
- Six subject area working groups
- Four regional prioritization groups
- First meeting June 2018



Objectives of the FMTF

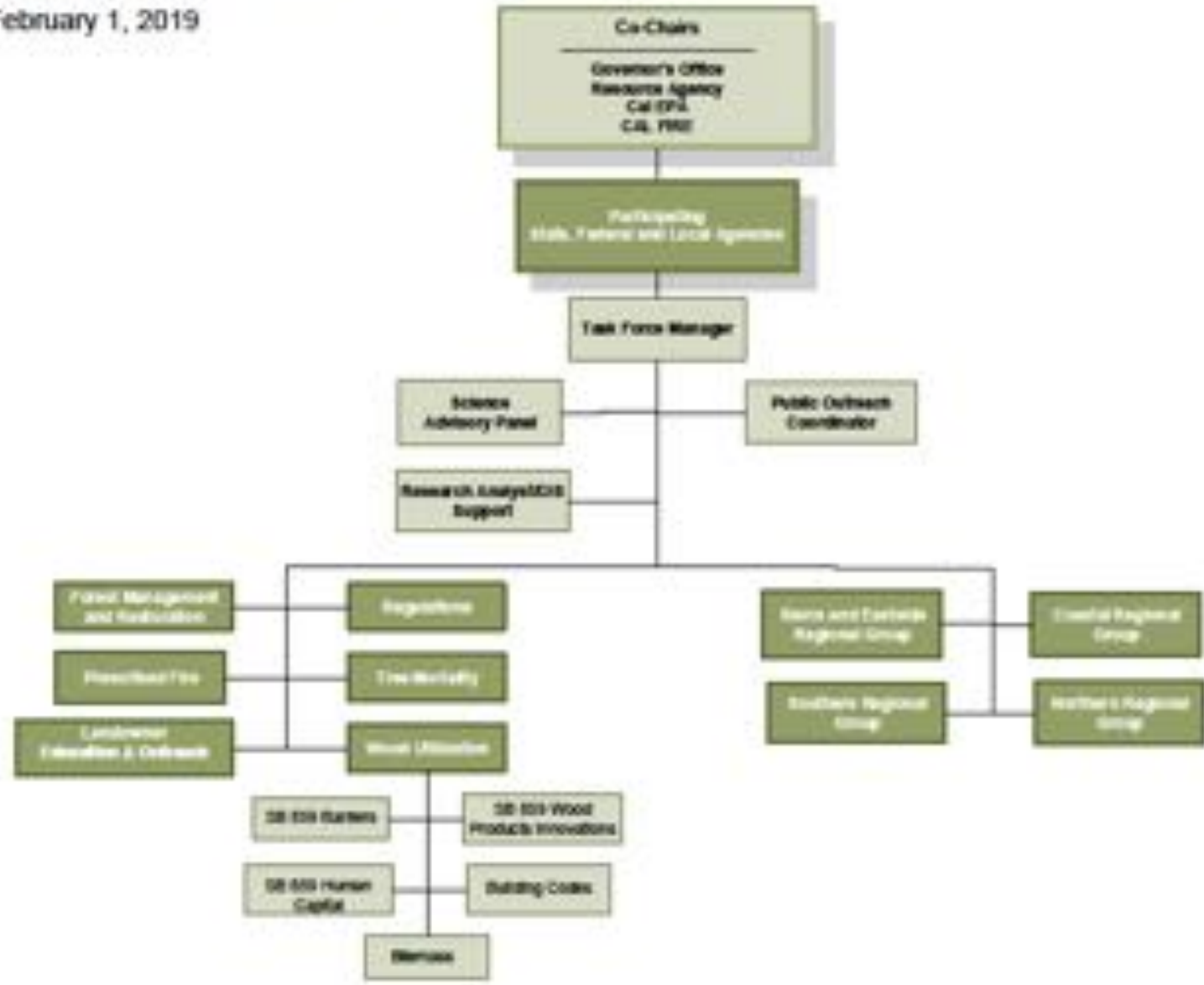


- Encourage coordination
- Facilitate forest health, prescribed fire, and fuel reduction activities
- Develop regional strategies
- Harmonize cross-jurisdictional regulatory & permitting requirements
- Provide consistent and coordinated messaging
- Measure progress and monitor outcomes

Forest
Management
Task Force

Forest Management Task Force

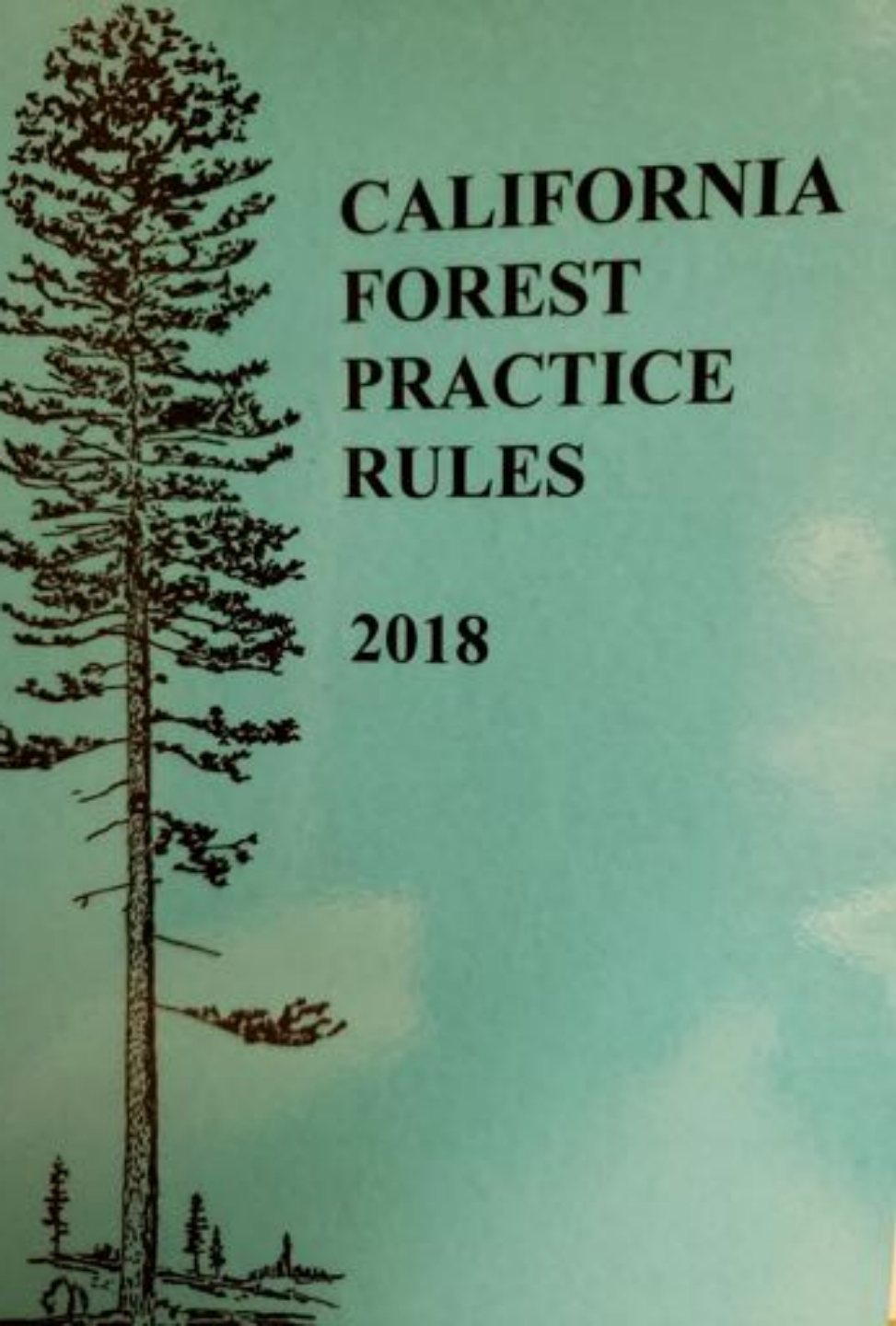
February 1, 2019





Forest Management and Restoration

- Implement Forest Carbon Plan
- Double statewide rate of treatments within 5 years from 250,000 acres to 500,000 acres/year
- Increase use of Good Neighbor Authority Agreements
- Build local capacity to plan and implement treatments on landscape



CALIFORNIA FOREST PRACTICE RULES

2018

Regulations

- Reduce barriers for forest health and fuel reduction treatments
- Provide permitting assistance to small landowners
- Synchronize and expedite regulatory review (CalTREES)
- Make non-confidential cultural and biological resources data readily accessible online



Prescribed Fire

- Increase the opportunities for Prescribed Fire
- Develop a publicly available online clearinghouse for permitting of prescribed fire projects
- Develop a training and certification program for prescribed fire projects
- Work with Department of Insurance on the risk pool as required by AB 2091



Landowner Education and Outreach

- Provide educational programs and outreach to private landowners and other interested parties on:
 - Forest Restoration
 - Fuels Reduction
 - Permitting requirements



Wood Utilization

- Increase rural economic development around wood product manufacturing
- Support development of a pilot training program in forest thinning and biomass processing
- Incentivize bioenergy facilities utilizing high hazard zone material
- Work with CPUC to update procurement programs for small bioenergy renewable generators
- Incorporate Tall Wood Building Proposal into CA Building Codes
- Implement a statewide mass timber building competition



Tree Mortality

- Continue to coordinate removal of hazard trees from high priority counties (Placer south through Kern)
- Identify areas of state to be prioritized for hazard tree removal
- Provide a web viewer to support tracking tree mortality and tree removal projects
- Track county progress and identify funding sources for future needs



Regional Prioritization Groups

- Assess regional threats to forest health and resilience
- Support multi-stakeholder landscape collaboratives
- Incentivize creation of multi-stakeholder collaboratives in prioritized areas where none exist
- Provide recommendations for high priority regional projects for consideration of state funding



Science Advisory Panel

- Track and communicate emerging research on relevant topics
- Provide scientific advice
- Identify critical information gaps
- Provide scientific rationale to framework for evaluating success

DON'T BE DENSE. THIN YOUR TREES.

Thin dense growth now
for healthier trees and
reduced wildfire risk.



PrepareforBarkBeetle.org

Public Information

- Develop Statewide Mass Media Campaign to increase public support for forest management activities
- Organize public workshops
- Maintain social media accounts
- Act as clearinghouse for information
- Coordinate public messaging amongst state agencies and cooperators
- www.CAForestTaskForce.org



CAL FIRE Activities

- Task Force Leadership
- CCI Forest Health and Fire Prevention Grants
- Good Neighbor Authority Projects
- California Forest Improvement Program
- Vegetation Management Program
- Forest Practice Regulation
- 10 Fuel Reduction Crews
- Fire suppression personnel conducting fuel reduction projects outside of fire season
- Public messaging

California Climate Investments



2018-2019 Budget

- \$160 million to CAL FIRE CCI Programs:
 - \$155 million for Forest Health, Forest Legacy, and Fire Prevention grants
 - \$5 million to the CAL FIRE Urban and Community Forestry Program
- Additional \$3 million for Research-only grants.

SB901 Wildfires

- \$155 million for Forest Health and Fire Prevention for 5 years
- Prescribed Fire Crews for 5 years

<http://www.fire.ca.gov/grants/grants>

What is our future?



My crystal ball shows:

- Vibrant rural communities
- Expanded employment opportunities in land management and manufacturing
- Forest biomass of all sizes put to its highest and best use
- Public support for prescribed fire, fuel reduction, and commercial forest management
- Wildfires that burn around and into communities with very little disruption to peoples lives



Kevin Conway
Forest Management Task Force Manager
Kevin.Conway@fire.ca.gov
(530) 339-0286
www.CAForestTaskForce.org

